

Products Brochure

Solar Energy | LEDs | Lithium Battery Packs
OEM & ODM SOLAR MANUFACTURER

Address: No.4 Hongda Road, Guzhen, Zhongshan, China



 @KEQIENERGY

WhatsApp:0086-159-1826-1493Kiki

Email:kikiguo@keqienergy.com

www.keqienergy.com

About KEQI ENERGY

Guangdong Keqi, a subsidiary of Keqi Energy, mainly produces solar energy storage inverters, photovoltaic panels, lithium battery LiFePO₄ packs, solar lighting, and supporting household appliances. Established in 2007, we have accumulated a wealth of experience in OEM manufacturing and innovative research and development.

We are committed to developing clean energy applications and lithium battery products. With a strong focus on sustainability, we strive to create innovative solutions that not only reduce environmental impact but also meet the growing demand for energy storage. Through continuous research and development, we aim to provide reliable and efficient lithium battery products that contribute to improving clean energy technologies and the transition towards a greener future.



Professional and Expert
Clean Energy OED/ODM
Manufacturer

Professional and Expert Clean Energy
OED/ODM Manufacturer

Product Contents

- Solar Inverter、 Controller & Solution
- Portative Power Station
- Lithium Battery Pakcs
- Solar LEDs / Solar Fan/ Solar CCTV

Page 01-12

Page 13-25

Page 26-30

Page 31-40

Solar Inverter & Solution+

Let's Unlock Your Max Profits!

A solar inverter is a device that converts the direct current (DC) energy generated by solar panels into alternating current (AC) energy.

Here is how it works:

1. Solar panels convert sunlight into DC energy.
2. The DC energy enters the solar inverter through its input.
3. The inverter converts the DC energy into AC energy.
4. The converted AC energy is then supplied to the power grid or used directly to power electrical devices.

Solar inverters enable the utilization and application of solar energy by converting the DC energy generated by solar panels into AC energy, allowing it to be connected to the power grid or used directly to power electrical devices.



KQ- IVQ110-1KW~5KW High Frequency Inverter

Model



Datesheet	KQ-IVQ110-1KW	KQ-IVQ110-2KW	KQ-IVQ110-3KW	KQ-IVQ110-3KW-P	KQ-IVQ110-5KW
Rated power	1000W	2000W	3000W	3000W	5000W
Peak power	2000VA	4000VA	6000VA	6000VA	10000VA
Battery					
Battery Voltage	12Vdc		24Vdc		48Vdc
Battery type	Lithium battery/Lead-acid battery				
Constant charge voltage (can be setting)	14.1Vdc		28.2Vdc		56.4Vdc
Floating charge voltage (configurable)	13.5Vdc		27Vdc		54Vdc
Input					
Input standard	L+N+PE				
Input voltage	220VAC				
Voltage range	154-264 VAC ±3V (normal mode)				
Surge Power	2000VA	4000VA	6000VA	6000VA	10000VA
Frequency	50/60Hz ±0.1%				
Output					
Output voltage	208VAC/ 220VAC/ 230VAC/ 240VAC ±5%				
Transfer Time	10ms typical,20ms Max.				
Overload capacity	1min@102%~110%Load 10s@110%~130% Load 3s@130%~150%Load 200ms@>150%Load				
Peak capacity	>93%		>94%		
Waveform	Pure Sine Wave				
Charger					
Charge mode	PWM			MPPT	
Maximum Pv array power	600W	1200W	1500W	3500W	5500W
MPPT range operating voltage	55Vdc	80Vdc	145Vdc	450Vdc	450Vdc
Maximum PV charge current	50A			60A	80A
Maximum AC charging current	50A			60A	80A
Maximum charging current	100A		120A	60A	80A
MPPT tracking range	N/A		30-115Vdc		120-430Vdc
Charge Current	50A			60A	80A
AC Input Voltage	220VAC				
Selectable Voltage Range	154-264 VAC ±3V (Normal) ; 185~264VAC ±3V (UPS)				
Frequency Range	50/60Hz ±0.1%				
Others					
Operating Temperature	0~40 °C				
Storage Temperature	-15 ~60 °C				
Humidity	20%~95%				
Attitude	less than 1000m				
LCD	Operation mode/load/load/output, etc				
R32	5 PIN/ Pitch 2.54mm; Lithium battery BMS Devicenet, WI-FI Devicenet, etc				
Parallel operation	Nonsupport			Support	
Dimension(W*H*D)	490*312*125mm				
Net Weight	4.21kg	6.21kg	8.21kg	8.21kg	10.2kg

- Pure sine wave high frequency inverter
- LCD setting & Optional WIFI/GPRS remote monitoring
- Smart overload / over-temperature/short circuit protection
- Intelligent battery charger design for optimized battery performance
- Supports parallel operation for capacity expansion

KQ- IVP300-3KW~6KW IP66 High Frequency Hybrid Inverter

Model



Datesheet	KQ- IVP300-3KW	KQ- IVP300-4KW	KQ- IVP300-5KW	KQ- IVP300-6KW
Rated power	3000W	4000W	5000W	6000W
Peak power	3300VA	4400VA	5500VA	6000VA
Battery				
Battery Voltage	48V			
Battery type	Lithium battery/Lead-acid battery			
Constant charge voltage (can be setting)	60V			
Max. charge current	75A	100A	120A	120A
Input				
Input standard	L+N+PE			
Input voltage	220VAC / 230VAC			
Voltage range	150-450 VAC ±3V (normal mode)			
Surge Power	6000W	8000W	10000W	12000W
Frequency	50/60Hz ±0.1%			
Output				
Output voltage	220VAC / 230VAC			
Transfer Time	10ms typical,20ms Max.			
Overload capacity	1min@102%~110%Load	10s@110%~130% Load	3s@130%~150%Load	200ms@>150%Load
Peak capacity	>94.5%		>94.5%	
Waveform	Pure Sine Wave			
Max output current	15A	20A	25A	27A
Charger				
Charge mode	MPPT			
Maximum Pv array power	6000W	8000W	10000W	12000W
MPPT range operating voltage	125V	125Vdc	125Vdc	125Vdc
Maximum input current	18A	18A/18A	18A/18A	18A/18A
MPPT	1	2	2	2
Others				
Operating Temperature	-25~60 °C			
Storage Temperature	-30 ~65 °C			
Humidity	0%~95%			
Attitude	less than 4000m			
LCD	Operation mode/load/load/output, etc			
R32	5 PIN/ Pitch 2.54mm; Lithium battery BMS Devicenet, WI-FI Devicenet, etc			
Parallel operation	Support			
Dimension(W*H*D)	198*427*554mm			
Net Weight	20KG			

- Pure sine wave On/off grid hybrid inverter
- Waterproof IP66
- LCD setting & Optional WIFI/GPRS remote monitoring
- Smart overload / over-temperature/short circuit protection
- Intelligent battery charger design for optimized battery performance
- Supports parallel operation for capacity expansion

KQ- IVP300T-3KW~12KW IP66 Three-Phase Hybrid Inverter

Model



Datesheet	KQ- IVP300T-5KW	KQ- IVP300T-6KW	KQ- IVP300T-7KW	KQ- IVP300T-8KW	KQ- IVP300T-10KW	KQ- IVP300T-12KW
Rated power	5500W	6600W	7700W	8800W	11000W	13200W
Peak power	5500W	6600W	7700W	8800W	11000W	13200W
Battery						
Battery Voltage	48V					
Battery type	Lithium battery/Lead-acid battery					
Constant charge voltage (can be setting)	60V					
Max. charge current	120A	125A	150A	190A	210A	250A
Input						
Input standard	3W/N/PE					
MPPT voltage range	200~800V					
Max. input voltage	1000V					
Surge Power	10KW	12KW	14KW	16KW	20KW	25KW
Operation voltage	150V					
MPPT	1	1	1	2	2	2
Maximum input current	18A	18A	28A	18A/18A	36A/18A	36A/18A
Frequency	50/60Hz ±0.1%					
Maximum Pv array power	10KW	12KW	14KW	16KW	20KW	24W
Output						
Output voltage	380VAC / 400VAC					
Transfer Time	10ms typical,20ms Max.					
Overload capacity	1min@102%~110%Load		10s@110%~130% Load		3s@130%~150%Load 200ms@>150%Load	
Peak capacity	>98%			>98%		
Max output current	8.3A	10A	11.6A	13.3A	16.7A	20A
Others						
Operating Temperature	-25~60 °C					
Storage Temperature	-30 ~65 °C					
Humidity	0%~95%					
Attitude	less than 4000m					
LCD	Operation mode/load/load/output, etc					
R32	5 PIN/ Pitch 2.54mm; Lithium battery BMS Devicenet, WI-FI Devicenet, etc					
Parallel operation	Support					
Dimension(W*H*D)	475*683*256mm					
Net Weight	38KG					

- Three-phase solar inverter
- Waterproof IP66
- LCD setting & Optional WIFI/GPRS remote monitoring
- Smart overload / over-temperature/short circuit protection
- Intelligent battery charger design for optimized battery performance
- Supports parallel operation for capacity expansion

KQ- IVW220-5KW-10KW Low Frequency MPPT Inverter

Model

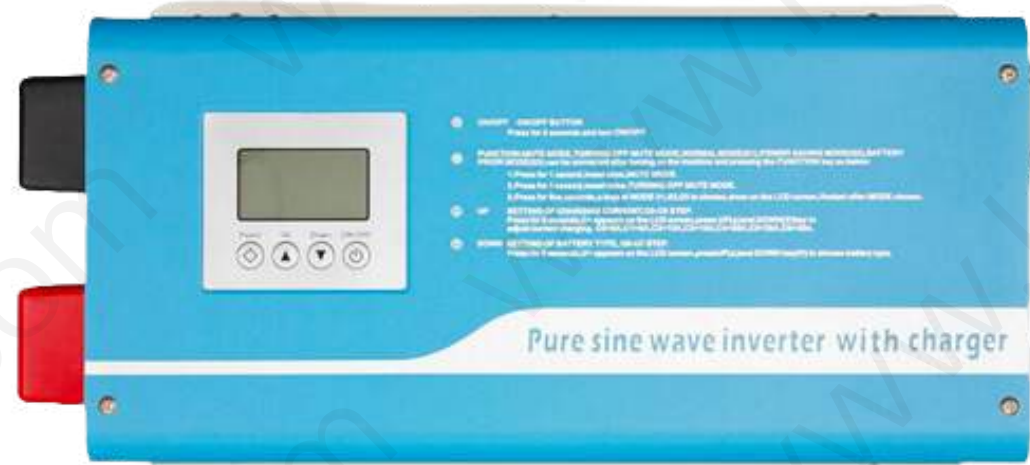


- Low frequency MPPT charge Controller
- Pure sine wave output
- LCD setting & Optional WIFI/GPRS remote monitoring
- Smart overload / over-temperature/short circuit protection
- Supports parallel operation for capacity expansion

Datesheet	KQ-IVW220-5KW	KQ-IVW220-10KW
Rated power	5000W	10000W
Battery		
Battery Voltage	48Vdc	
Battery type	Lithium battery/Lead-acid battery	
Floating charge voltage (configurable)	54Vdc	
Input		
Input voltage	220VAC	
Voltage range	154-264 VAC ±3V (normal mode) 185-264VAC (ups mode)	
Frequency	50/60Hz ±0.1%	
Output		
Output voltage	220VAC	
Transfer Time	≤10ms typical, ≤20ms Inv.	
Load peak ratio	Max 3:1	
Overload capacity	alarm buzzer <130% Load 1s, 30s turn-off output ; >150% 300s trun-off output	
Waveform	Pure Sine Wave	
Charger		
Charge mode	MPPT	
Maximum Pv array power	3200W	6400W
MPPT range operating voltage	MPPT 60-150VDC	
Maximum PV charge current	60A	120A
Maximum AC charging current	30A	60A
AC Input Voltage	220VAC	
Selectable Voltage Range	154-264 VAC ±3V (normal mode) 185-264VAC (ups mode)	
Frequency Range	50/60Hz ±0.1%	
Others		
Operating Temperature	0~40 °C	
Storage Temperature	-15 ~45 °C	
LCD	Operation mode/load/load/output, etc	
R32	5 PIN/ Pitch 2.54mm; Lithium battery BMS Devicenet、 WI-FI Devicenet, etc	
Parallel operation	Support	
Dimension(W*H*D)	530*330*131mm	545*400*200mm

KQ- IVT01 Pure Sine Wave Inverter With Charger 1KW-10KW

Model



- Pure sine wave output for compatibility with loads of different types
- A wide range of input voltage, accurate output and automatic voltage stabilization
- LCD setting

Datesheet	KQ-IVT01-1KW	KQ-IVT01-1.5KW	KQ-IVT01-2KW	KQ-IVT01-3KW	KQ-IVT01-4KW	KQ-IVT01-5KW	KQ-IVT01-6KW	KQ-IVT01-8KW	KQ-IVT01-10KW
Battery Voltage	12/24/48V			24V/48V			48V /96V		
Battery	U0-U7								
Input									
Rated Power	1000W	1500W	2000W	3000W	4000W	5000W	6000W	8000W	10000W
Voltage Range	85-138VAC/170-275VAC								
Frequency	45~65Hz								
Output									
Voltage Range	110/220VAC ±5% @ 50/60Hz								
Output wave	Pure Sine Wave								
Conversion Time	less than 10ms(Typical load)								
Efficiency	more than 85%								
Others									
Overload	110-120%/30s; more than 160%/300ms								
Protection Function	Battery over-voltage/Battery under-voltage/Overload/Short circuit/Over temperature protection,etc.								
Humidity	0%~90%,no condensation								
Operation temperature	0~40°C								
LCD	Operation mode/load/load/output, etc								
Dimension(W*H*D)	486*247*179mm			555*307*189mm			635*332*260mm		

KQ- IVCS-Single-Phase Inverter With Built-in Charge Controller 8KW-30KW

Model



- A power-on test function, which can avoid the faults because of hazards of the inverter
- A wide range of input frequencies, which realize the stable operation of fuel generators
- Frequency tracking, noise filtering and low distortion in inverter output

Datesheet	KQ-IVCS-8KW	KQ-IVCS-10KW	KQ-IVCS-15KW	KQ-IVCS-20KW	KQ-IVCS-30KW
Rated Power	8KW	10KW	15KW	20KW	30KW
Battery					
Battery voltage	192VDC/220VDC/240VDC				
Voltage of over discharge protection	168VDC/189VDC/210VDC				
Restart voltage after low battery	216VDC/243VDC/270VDC				
MPPT Controller					
Controller Types	With Max. power point tracking MPPT function controller				
Rate current	solar1:50A ; solar 2:50A				
Current limiting protection	solar1:52A ; solar 2:52A				
Rate voltage	192VDC/220VDC/240VDC				
System identification voltage range	/				
Operating voltge range	DC 260V-DC 420V				
Charge mode	Three stages: constant current(quick charge), constant pressure, floating charge				
Battery Type	lead-acid battery or you can customize parameters to charge others				
PV module input power	192VDC:solar 1,10KW; solar 2,10KW; 220VDC: solar 1,11.5KW; solar 2,11.5KW; 240VDC:solar 1,12.5KW; solar 2,12.5KW;				
Vmax-pv	less than 420VDC				
Vlow-pv	240VDC/250VDC/270VDC				
Vstar-pv	260VDC/270VDC/290VDC				
Vovet-pv	425VDC				
Floating charge voltage (Lead acid battery)	220.8VDC/248.4VDC/276VDC (can be customized)				
Average charging voltage (Lead acid battery)	232VDC/261VDC/290VDC (can be customized)				
PV module utilization	less than 99.97%				
Machine effeciency	more than 96.5%				
Output regulation accuracy	less than ±1.5%				
Temperature coefficient	±0.02%/ °C				
Temperature compensation	14.2V-(max. temperature -25°C) * 0.3				
Protective fuction	Input and output over-voltage protection,anti-reverse protection, short circuit protection,etc.				
Input					
Input voltage	220VAC ±20%. 60/50Hz ±5%				
Output voltage	220VAC ±20%. 60/50Hz ±5%				
Output wave	pure sine wave THD less than 4%				
Conversion time	less than 10ms				
Overload	110-120% / 30S; more than 150%/300MS;				
Efficiency	more than 90%				
Dynmic load voltage transient	Output short circuit, overvoltage, low voltage, low battery power protection				
Others					
Operating ambient temperature & Humidity	-10-40°C.; 20-90%				
Dimension(W*H*D)	536*560*1015				635*566*1295
Weight	125kg	148kg	165kg	182kg	252kg

KQ- IVCT-Threse-Phase Inverter With Built-in Charge Controller 10KW-30KW

Model



- Visualization of operation status of the equipment through simple LEDs and a LCD display
- Settable battery protection parameters, and a function of password protection;
- Excellent performance because of the DSP intelligent control inversion technology

Datesheet	KQ- IVCT-10KW	KQ- IVCT-15KW	KQ- IVCT-20KW	KQ- IVCT-30KW
Rated Power	10KW	15KW	20KW	30KW
Battery				
Battery voltage	192VDC/216VDC/240VDC			
Low power shutdown voltage	172VDC/194VDC/216VDC			
Restart voltage after low battery	216VDC/243VDC/270VDC			
MPPT Controller				
Controller Types	With Max. power point tracking MPPT function controller			
Rate current	solar1:50A ; solar 2:50A			
Current limiting protection	solar1:52A ; solar 2:52A			
Rate voltage	192VDC/216VDC/240VDC			
System identification voltage range	/			
Operating voltage range	DC 260V-DC 420V			
Charge mode	Three stages: constant current(quick charge), constant pressure, floating charge			
Battery Type	lead-acid battery or you can customize parameters to charge others			
PV module input power	192VDC:solar 1,10KW; solar 2,10KW; 216VDC: solar 1,11.5KW; solar 2,11.5KW; 240VDC:solar 1,12.5KW; solar 2,12.5KW;			
Vmax-pv	less than 420VDC			
Vlow-pv	240VDC/250VDC/270VDC			
Vstar-pv	260VDC/270VDC/290VDC			
Vovet-pv	425VDC			
Floating charge voltage (Lead acid battery)	220.8VDC/248.4VDC/276VDC (can be customized)			
Average charging voltage (Lead acid battery)	232VDC/261VDC/290VDC (can be customized)			
PV module utilization	less than 99.97%			
Machine efficiency	more than 96.5%			
Output regulation accuracy	less than ±1.5%			
Temperature coefficient	±0.02%/ °C			
Temperature compensation	14.2V-(max. temperature -25°C) * 0.3			
Protective function	Input and output over-voltage protection,anti-reverse protection, short circuit protection,etc.			
Input				
Input phase number	Three-phase+N+G			
Input voltage	380VAC ±15%. 60/50Hz ±5%			
Output voltage	AC220/380VAC ±20%. 60/50Hz ±5%			
Output waveform & Efficiency	pure sine wave ; more than 90% (100% resistive load)			
Total harmonic distortion	Linear load less than 3% Nonlinear load less than 5%			
Dynamic load voltage transient	less than ±5%(0-100%)			
Instantaneous recovery time	less than 10ms			
Battery and mains switching time	1s-3s			
Unbalanced voltage	less than ±3%(blancing load voltage)			
Overload capacity	120% 20s; more than 150%, 100ms			
Others				
Operating ambient temperature & Humidity	-10-40°C. ; 0-90%			
Dimension(W*H*D)	635*566*1295			
Weight	180kg	220kg	263kg	320kg

KQ- SC03 MPPT Solar Charge Controller 40A-100A

Model



- Pure sine wave output for compatibility with loads of different types
- A wide range of input voltage, accurate output and automatic voltage stabilization
- LCD setting

Datasheet	KQ-SC03-40A	KQ-SC03-60A	KQ-SC03-80A	KQ-SC03-100A
Rated Current	40A	60A	80A	100A
Voltage	12V/24V/36V/48V			
Charge mode	MPPT (3 stage: constant current, constant voltage, floating charge)			
Battery Type	Lead batteries / Lithium battery			
MPPT Range@ Operating Voltage	DC 150V (At minimum temperature); DC 138V (At 25 degrees Celsius)			
Conversion Time	less than 10s			
Dynamic response recovery time	less than 500us			
Maximum power @ operating voltage range	20~150VDC (12V)			
	36~150VDC (24V)			
	48~150VDC (36V)			
	64~150VDC (48V)			
Rated charging power 12V	540W	800W	1040W	1300W
Rated charging power 24V	1080W	1600W	2080W	2600W
Rated charging power 36V	1620W	2400W	3120W	3900W
Rated charging power 48V	2160W	3200W	4160W	5200W
Others				
Load current	40A			
Communication	RS485			
Protection Funicton	Battery over-voltage/Battery under-voltage/Overload/Short circuit/Over temperature protection,etc.			
Humidity	0%~90%,no condensation			
Operation temperature	-10~50°C			
LCD	Operation mode/load/load/output, etc			
Dimension(W*H*D)	219*260*110mm		275*348*109mm	

Home Solar Energy+

Clean Energy & Cost-saving



Off-grid	Solar Inverter	Battery	PV Panel
3KW solutions	3KW single phase	51.2V 2.6KWH	2 piece 360W monocrystalline silicon
6KW solutions	6KW single phase	51.2V 5.12KWH	12 piece 360W monocrystalline silicon
11KW solutions	11KW single phase	51.2V 15.36KWH	18 piece 360W monocrystalline silicon

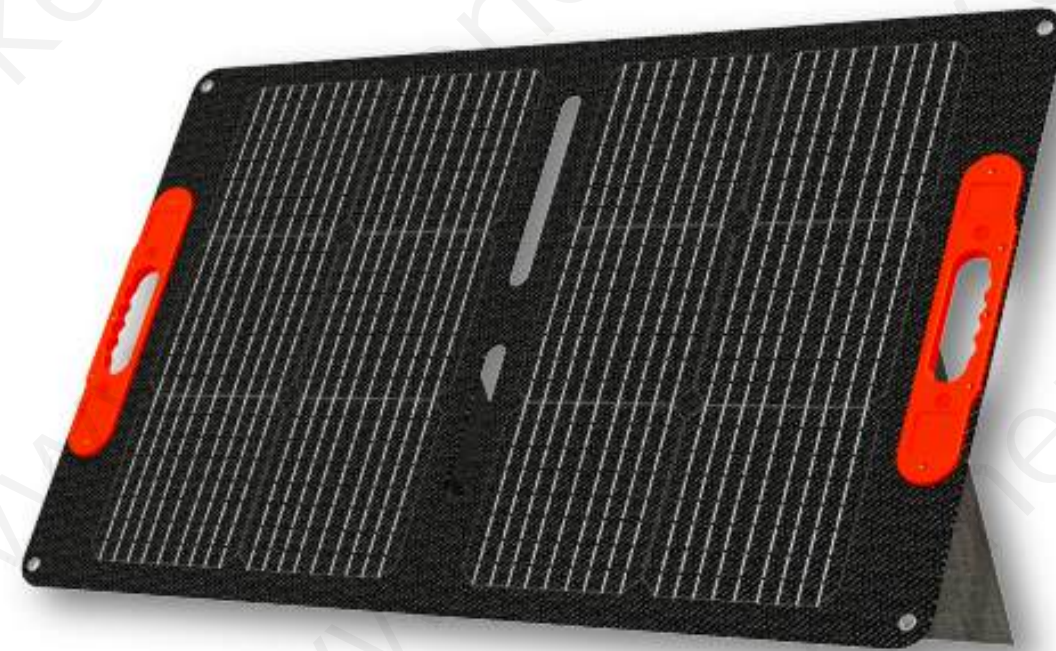
*Can be customized according to your needs

Solar Panel

you may choose



Solar Module
Glass Floding
120~240W-182MBB MONO PWM



Solar Module
c
50~200W-166MBB MONO ETFE

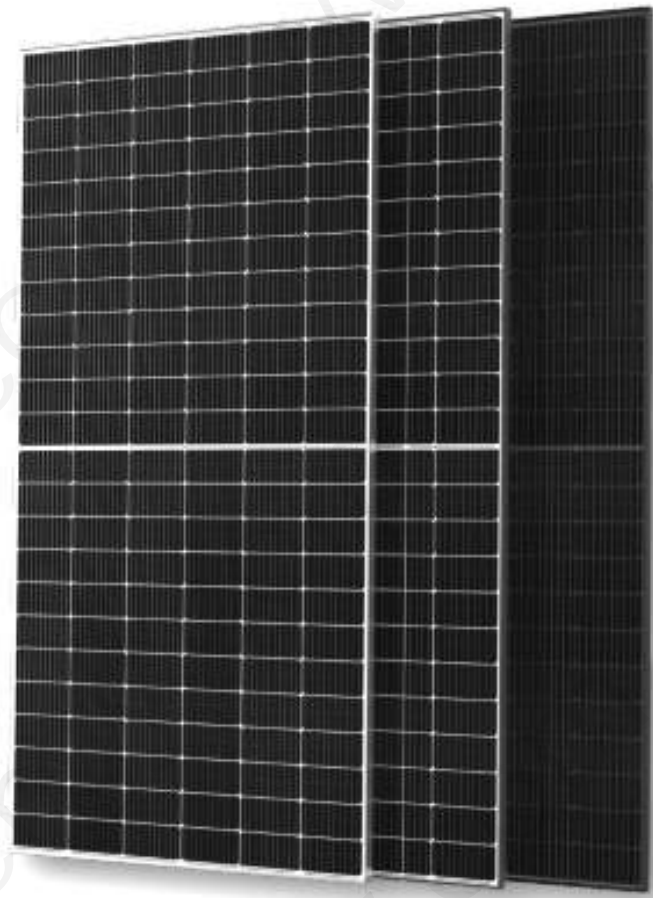


Solar Module
Flexible
12~450W-182MBB MONO

Solar Panel



you may choose



Solar Module
Half-Cut
240~550W-182MBB MONO



Solar Module
158 Poly
10~330W-158 Poly



Solar Module
182 Mono
10~450W-182MBB MONO



Portable Power Station

[Explore Your Power Scenarios](#)

A portable power station is a device that typically includes a rechargeable battery, AC outlets, DC outlets, and USB ports to provide power for various electronic devices and appliances when you are on the go or in places where traditional power sources are not available.

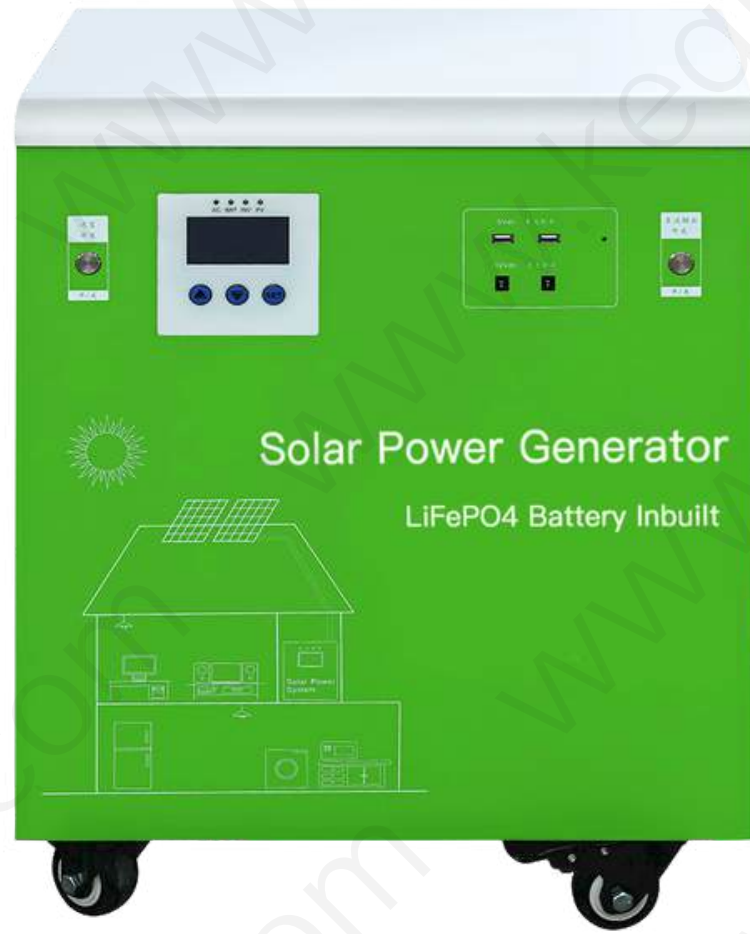
Using a portable power station provides the benefit of charging your electronic devices and appliances anywhere, whether outdoors, traveling, camping, or experiencing a power outage. It offers a convenient and reliable power source for your essential devices.



Portable Power Station

KQ- ST- MPPT 3KW/6KW Solar Generator Battery Inbuilt

Model



- Combined power inverter, MPPT solar charge controller
- Pure sine wave inverter power supplies stable electricity.house appliances
- Simple installation and free maintenance to user

Datesheet	KQ-ST-3000W	KQ-ST-6000W
Rated Power	3000W	6000W
Battery	5.12KWH	10.24KWH
Battery Type	LiFePO4 Lithium	
Battery voltage	51.2VDC / 48VDC	
Inverter		
Input voltage	85-138VAC/170-275VAC	
Input frequency	45-65Hz	
Output voltage	110/220VAC	
Output frequency	50/60Hz	
Output wave	Pure Sine Wave	
MPPT Solar Input		
MPPT voltage range	60VDC-150VDC	
PV power	1500W	3000W
Rated charge current	60A Max	60A max
MPPT efficiency	99%	
Floating charge voltage	57.6VDC	
DC Output		
Low voltage recovery voltage	57.6VDC	
Low voltage protection voltage	53.6VDC	
5VDC USB output	2pcs / Max.2A	
12VDC output ports	2pcs / Max.2A	
Others		
Operating ambient tepearature	-20~50°C	
Storage ambient temperature	-25~55°C	
Heat dissipation	Temperature control by intelligent exhaust fan	
Display	Digital LCD	
Dimension	525*315*650mm	645*380*755mm

KQ- ST- MPPT 3000/6000 Solar Generator with Solar Panel

Model



- Combined power inverter, MPPT solar charge controller
- Pure sine wave inverter power supplies stable electricity.house appliances
- Simple installation and free maintenance to user
- Perfect off-grid system, matched with high-efficiency monocrystalline silicon photovoltaic panels

Datesheet	KQ-ST-3000-2.56KWH X 2*550W	KQ-ST-6000-10.24KWH X 5*550W
Rated Power	3000W	6000W
Battery	5.12KWH	10.24KWH
Battery Type	LiFePO4 Lithium	
Battery voltage	51.2VDC / 48VDC	
Solar Panel	2 * 550W	5 * 550W
Solar Panel Type	High efficiency monocrystalline silicon solar panels	
Inverter		
Input voltage	85-138VAC/170-275VAC	
Input frequency	45-65Hz	
Output voltage	110/220VAC	
Output frequency	50/60Hz	
Output wave	Pure Sine Wave	
MPPT Solar Input		
MPPT voltage range	60VDC-150VDC	
PV power	3000W	6000W
Rated charge current	60A Max	60A max
MPPT efficiency	99%	
Floating charge voltage	57.6VDC	
DC Output		
Low voltage recovery voltage	57.6VDC	
Low voltage protection voltage	53.6VDC	
5VDC USB output	2pcs / Max.2A	
12VDC output ports	2pcs / Max.2A	
Others		
Operating ambient tepearature	-20~50°C	
Storage ambient temperature	-25~55°C	
Heat dissipation	Temperature control by intelligent exhaust fan	
Display	Digital LCD	
Dimension	525*315*650mm	645*380*755mm

Portable Power Station

KQ- PG300-128Wh/256Wh Energy storage

Model



- PG300 equipped with a PWM charging system, it ensures efficient power management, delivering optimal charging performance for your devices
- LCDs display the power level
- Portable handheld design, more convenient to carry

Datesheet	KQ- PS300-128Wh	KQ- PS300-256Wh
Battery Type	LiFePO4 Lithium	
battery capacity	128Wh	256Wh
Specification		
Output voltage	DC 12V	
Housing Material	Iron art	
Charge	PV / AC adapter	
Others		
USB Output	5V 2.5A * 2units	
DC Output	12V 10A *4units	
LED Bulb	5W *4pcs	
PV Charging	Yes	
Indicator	LCD screen	
Adapter	AC adapter	
Dimension	217*120*137mm	
Color	yellow	
Optional accessories		
vehicle charging cable	Otional	
PV panel	18V 10W~50W	

Portable Power Station

KQ- PG300-128Wh/256Wh with Solar panel Energy storage

Model



- PG300 equipped with a PWM charging system, it ensures efficient power management, delivering optimal charging performance for your devices
- LCDs display the power level
- Portable, with multiple usage scenarios, and can be combined with photovoltaic panels in an off-grid manner

Datesheet	KQ- PS300-128Wh-20W	KQ- PS300-256Wh-50W
Battery Type	LiFePO4 Lithium	
battery capacity	128Wh	256Wh
Solar Panel	20W	50W
Solar Panel Type	Mono-si A grade solar panel	
Specification		
Output voltage	DC 12V	
Housing Material	Iron art	
Charge	PV / AC adapter	
Others		
USB Output	5V 2.5A * 2units	
DC Output	12V 10A *4units	
LED Bulb	5W *4pcs	
PV Charging	Yes	
Indicator	LCD screen	
Adapter	AC adapter	
Dimension	217*120*137mm	
Color	yellow	
Optional accessories		
vehicle charging cable	Otional	
PV panel	18V 10W~50W	

Portable Power Station

KQ- PS300-256Wh/320Wh/448Wh Energy storage

Model



- PS300 series portable power station comes with a Bluetooth speaker function, bringing more fun to your outdoor activities
- LCDs display the power level
- Portable handheld design, more convenient to carry
- Support mains, photovoltaic and vehicle charging

Datesheet	KQ- PS300-256Wh	KQ- PS300-320Wh	KQ- PS300-448Wh
Battery Type	LiFePO4 Lithium		
battery capacity	256Wh	320Wh	448Wh
Specification			
Output voltage	AC 220V/ DC 5V/ DC 12V		
Input voltage	DC 14.5V 5A		
Optical charge	18V 5A		
Others			
USB Output	5V2A * 2		
DC Output	12V3A		
AC Output	3-pin power outlet & 2-pin power outlet		
LED light	Yes		
Cigarette Lighter Output	14.6V 3A		
Indicator	LCD screen		
Recreational function	Bluetooth audio		
Adapter	50W AC adapter		
Dimension	390*110*265mm		
Color	Black, white, gray, red		
Optional accessories			
vehicle charging cable	Optional		
PV panel	18V 30-60W		

Portable Power Station

KQ- PS300-256Wh/320Wh/448Wh Energy storage with Solar Panel

Model



Datesheet	KQ- PS300-256Wh-50W	KQ- PS300-320Wh-50W	KQ- PS300-448Wh-50W
Battery Type	LiFePO4 Lithium		
battery capacity	256Wh	320Wh	448Wh
Solar Panel	50W		
Solar Panel Type	Mono-si A grade solar panel		
Specification			
Output voltage	AC 220V/ DC 5V/ DC 12V		
Input voltage	DC 14.5V 5A		
Optical charge	18V 5A		
Others			
USB Output	5V2A * 2		
DC Output	12V3A		
AC Output	3-pin power outlet & 2-pin power outlet		
LED light	Yes		
Cigarette Lighter Output	14.6V 3A		
Indicator	LCD screen		
Recreational function	Bluetooth audio		
Adapter	50W AC adapter		
Dimension	390*110*265mm		
Color	Black, white, gray, red		
Optional accessories			
vehicle charging cable	Optional		

- PS300 series portable power station comes with a Bluetooth speaker function, bringing more fun to your outdoor activities
- LCDs display the power level
- Portable, with multiple usage scenarios, and can be combined with photovoltaic panels in an off-grid manner
- Support mains, photovoltaic and vehicle charging

Portable Power Station

KQ- PS500-768Wh with Car Emergency Starter Energy storage

Model



- The car emergency start function providing various usage scenarios for your daily use
- LCDs display the power level
- Equipped with flashing red and blue lights and 10W LED lighting, a helper for outdoor emergencies
- Support mains, photovoltaic and vehicle charging

Datesheet	KQ-PS500-768Wh
Battery Type	LiFePO4 Lithium
battery capacity	768Wh
Specification	
Output voltage	AC 220V/ DC 5V/ DC 12V
Input voltage	DC 14.5V 5A
Optical charge	18V 5A
Others	
USB Output	5V2A * 2
DC Output	12V3A
AC Output	3-pin power outlet *2
LED light	Yes, 10W LED lights , flashing light, 3meters cable with a 10W light bulb
Cigarette Lighter Output	14.6V 4A
Indicator	LCD screen
Car emergency starter	Support
Adapter	50W AC adapter
Dimension	350*250*210mm
Color	Orange
Optional accessories	
vehicle charging cable	Otional
PV panel	18V 30-60W

Portable Power Station

KQ- PS600-640Wh Wireless Charging Energy storage

Model



- LCDs display the power level
- Supports wireless charging for mobile phones, convenient and easy to use
- Support mains, photovoltaic, and vehicle charging
- Type- C and three-hole sockets to meet the daily use of backup power
- Equipped with LED lighting to enhance the ability of night operation

Datesheet	KQ-PS600-640Wh
Battery Type	LiFePO4 Lithium
battery capacity	768Wh
Specification	
Output voltage	AC 220V/ DC 5V/ DC 12V
Input voltage	DC 14.5V 5A / DC 18V 5A / XT60 18V15A
Optical charge	18V 5A
Others	
USB Output	QC3.0*5 , Type- C*1
DC Output	12V5A
AC Output	3-pin power outlet *3
XT60 Input	18V 5A
LED light	Yes, 10W LED lights
Wireless charger	Support
Cigarette Lighter Output	14.6V 5A
Indicator	LCD screen
Adapter	50W AC adapter
Dimension	300*250*335mm
Color	Grey
Optional accessories	
vehicle charging cable	Otional
PV panel	70W - 100W

Portable Power Station

KQ- PS600-640Wh Wireless Charging Energy storage with Solar Panel

Model



- LCDs display the power level
- Supports wireless charging for mobile phones, convenient and easy to use
- Support mains, photovoltaic, and vehicle charging
- Portable, with multiple usage scenarios, and can be combined with photovoltaic panels in an off-grid manner
- Type- C and 3 * three-hole sockets to meet the daily use of backup power
- Equipped with LED lighting to enhance the ability of night operation

Datesheet	KQ-PS600-640Wh
Battery Type	LiFePO4 Lithium
battery capacity	768Wh
Solar Panel	100W
Solar Panel Type	MONO ETFE / Mono-si Glass Pane
Specification	
Output voltage	AC 220V/ DC 5V/ DC 12V
Input voltage	DC 14.5V 5A / DC 18V 5A / XT60 18V15A
Optical charge	18V 5A
Others	
USB Output	QC3.0*5 , Type- C*1
DC Output	12V5A
AC Output	3-pin power outlet *3
XT60 Input	18V 5A
LED light	Yes, 10W LED lights
Wireless charger	Support
Cigarette Lighter Output	14.6V 5A
Indicator	LCD screen
Adapter	50W AC adapter
Dimension	300*250*335mm
Color	Grey
Optional accessories	
vehicle charging cable	Otional

Portable Power Station

KQ- PS1500-1280Wh Wireless Charging Energy storage

Model



- LCDs display the power level
- Supports wireless charging for mobile phones, convenient and easy to use
- Support mains, photovoltaic, and vehicle charging
- Type- C and three-hole sockets to meet the daily use of backup power
- Equipped with LED lighting to enhance the ability of night operation

Datesheet	KQ-PS1500-1280Wh
Battery Type	LiFePO4 Lithium
battery capacity	1280Wh
Specification	
Output voltage	AC 220V/ USB 5V/ DC 12V
Input voltage	DC 29.2V 5A / DC 36V 5A / XT60 36V15A
Optical charge	18V 5A
Others	
USB Output	QC3.0*5 , Type- C*1
DC Output	5521*2 24V5A
AC Output	3-pin power outlet *2
DC Input	5521 29.2V5A/36V 5A
XT60 Input	36V 15A
LED light	Yes, 10W LED lights
Wireless charger	Support
Cigarette Lighter Output	29.2V 5A
Indicator	LCD screen
Adapter	146W AC adapter
Dimension	370*230*205mm
Color	Grey
Optional accessories	
vehicle charging cable	Otional
PV panel	100W-200W

KQ- PS1500-1280Wh Wireless Charging Energy storage With Solar Panel

Model



- LCDs display the power level
- Supports wireless charging for mobile phones, convenient and easy to use
- Support mains, photovoltaic, and vehicle charging
- Portable, with multiple usage scenarios, and can be combined with photovoltaic panels in an off-grid manner
- Type- C and three-hole sockets to meet the daily use of backup power
- Equipped with LED lighting to enhance the ability of night operation

Datesheet	KQ-PS1500-1280Wh
Battery Type	LiFePO4 Lithium
battery capacity	1280Wh
Solar Panel	150W
Solar Panel Type	MONO ETFE / Mono-si Glass Pane
Specification	
Output voltage	AC 220V/ USB 5V/ DC 12V
Input voltage	DC 29.2V 5A / DC 36V 5A / XT60 36V15A
Optical charge	18V 5A
Others	
USB Output	QC3.0*5 , Type- C*1
DC Output	5521*2 24V5A
AC Output	3-pin power outlet *2
DC Input	5521 29.2V5A/36V 5A
XT60 Input	36V 15A
LED light	Yes, 10W LED lights
Wireless charger	Support
Cigarette Lighter Output	29.2V 5A
Indicator	LCD screen
Adapter	146W AC adapter
Dimension	370*230*205mm
Color	Grey
Optional accessories	
vehicle charging cable	Otional

Portable Power Station

KQ- PS3000-2560Wh Wireless Charging Energy storage

Model



- LCDs display the power level
- Supports wireless charging for mobile phones, convenient and easy to use
- Support mains, photovoltaic, and vehicle charging
- 2* Type- C and 4 * three-hole sockets to meet the daily use of backup power
- Equipped with LED lighting to enhance the ability of night operation

Datesheet	KQ-PS1500-1280Wh
Battery Type	LiFePO4 Lithium
battery capacity	2560Wh
Specification	
Output voltage	AC 220V/ USB 5V/ DC 24V
Input voltage	DC 29.2V 5A / DC 36V 5A / XT90 36V20A/ 36V15A
Optical charge	18V 5A
Others	
USB Output	QC3.0*4 , Type- C*2
DC Output	5521*2 24V5A
AC Output	3-pin power outlet *4
DC Input	5521 29.2V5A/36V 5A
XT90 Input	36V 20A
LED light	Yes, 10W LED lights
Wireless charger	Support
Cigarette Lighter Output	29.2V 5A
Indicator	LCD screen
Adapter	292W AC adapter
Dimension	480*270*350mm
Color	Grey
Optional accessories	
vehicle charging cable	Otional

Portable Power Station

KQ- PS3000-2560Wh Wireless Charging Energy storage

Model



- LCDs display the power level
- Portable, with multiple usage scenarios, and can be combined with photovoltaic panels in an off-grid manner
- Support mains, photovoltaic, and vehicle charging
- 2* Type- C and 4 * three-hole sockets to meet the daily use of backup power
- Equipped with LED lighting to enhance the ability of night operation
- It supports wireless charging for mobile phones, making it convenient and easy to use

Datesheet	KQ-PS1500-1280Wh
Battery Type	LiFePO4 Lithium
battery capacity	2560Wh
Solar Panel	200W
Solar Panel Type	MONO ETFE / Mono-si Glass Pane
Specification	
Output voltage	AC 220V/ USB 5V/ DC 24V
Input voltage	DC 29.2V 5A / DC 36V 5A / XT90 36V20A/ 36V15A
Optical charge	18V 5A
Others	
USB Output	QC3.0*4 , Type- C*2
DC Output	5521*2 24V5A
AC Output	3-pin power outlet *4
DC Input	5521 29.2V5A/36V 5A
XT90 Input	36V 20A
LED light	Yes, 10W LED lights
Wireless charger	Support
Cigarette Lighter Output	29.2V 5A
Indicator	LCD screen
Adapter	292W AC adapter
Dimension	480*270*350mm
Color	Grey
Optional accessories	
vehicle charging cable	Otional
PV panel	200W



Lithium Battery Pack

High cycle number

Lithium batteries have several advantages over lead-acid batteries, including higher energy density, lighter weight, longer lifespan, faster charging capabilities, and better performance in a wider range of temperatures.

KQ-LBS-51.2V 100-900Ah Stacked & Modular Energy storage battery

Model



- Optional cell brand and IP20/65 (optional)
- Modular & staked design for easy installation and extension
- With LCD screen and CAN/RS485/RS242 communication interface

Datesheet	KQ-LBS-5KW	KQ-LBS-10KW
Battery Type	LiFePO4 Lithium	
Mains Input		
Rated input voltage	208VAC/220VAC/230VAC/240VAC	
Mains supply input voltage range	170-280VAC; 90-280VAC	
Mains supply input frequency	50/60Hz	
Output		
Rated output voltage	208VAC/220VAC/230VAC/240VAC	
Surge power	20000VA	
Efficiency	94%	
Switching time	10ms	
Overload power	1min @102%-110% Load, 10s@110%-130% Load, 3s@130%-150% Load,0.2s@>150% Load	
Battery & AC charging		
Battery voltage rating	51.2VDC	
Floating charge voltage	54VDC	
Overcharge protection	64VDC	
Maximum charging current	80A	160A
PV charging		
Maximum PV array power	PV 5500w	1 way PV 5500w; 2 way PV 5500w
MPPT range operating voltage	120-430VDC	
Maximum PV array open circuit voltage	450VDC	
Maximum charge current	80A	160A
Maximum Efficiency	98%	
Mains supply and PV charging		
Mains supply & PV charging maximum	80A	160A
Charging current (AC charger plus PV charger)	80A	160A
Others		
Communication interface	vUSB/ RS232/ GPRS/ WIFI	
Humidity	5% to 95% relative humidity (non-condensing)	
Operating temperature range	0-55°C	
Dimension	770*410*222.5mm	930*410*222.5

KQ-LBM-Wall-mounted 2.56KWH~10.24KWH Energy storage battery

Model



- Large discharge current, suitable for solar system
- Innovative BMS system to optimize the efficiency
- RS485/CAN compatible with different brand of solar inverter

Datesheet	KQ-LBM-24100	KQ-LBM-24200	KQ-LBM-48100	KQ-LBM-48200
Battery Type	LiFePO4 Lithium			
Rated Capacity	2.56KWH	5.12KWH	5.12KWH	10.24KWH
Nominal voltage	25.6	25.6	51.2	51.2
Voltage range	20-28.8	20-28.8	40-57.6	40-57.6
Recommend charge cut-off voltage	28.8	28.8	57.6	57.6
Recommend discharge cut-off voltage	20	20	40	40
Max. charge & discharge current	100A/150A/200A			
DOD	>95%			
Moudules connection	1-6 in parallel			
Communication	CAN & RS485			
Cycle life	>4500 @25°C			
IP level	IP21			
Working temperature range	Discharge -20~65°C , Charge 0~55°C			
Internal resistance	≤ 30mΩ			
Maimum continuous charing current	0-70A			
Maimum continuous dischrge current	0-100A			
Power instructions	Have			
Weakness switch	Often Open Often Closed			
RS485 communication port	2			
Display screen	Have			
Storage temperature	Save for 3 moths from 0~30°C			
Transport and storage form	Static batteries shall betransported and stored under semifilled conditions (about 70%)			
Charging and protection	3.75V ± 50mV (monomer)			
Voltage overcharge is slow, overvoltage	3.55V ± 50mV (monomer)			
Discharge protection voltage	2.2V ± 100mV (monomer)			
Overslow,complex voltage	2.7V ± 100mV (monomer)			
Overcurrent protection	180 ± 10A			
Short circuit protection	Release condition 1s off-load / MOS tube bears the highest short circuit current			
Balanced function	Equilibrium current is 45±5mA			

Battery - Energy storage

KQ-LBR-Rack-mounted 100AH/200AH Energy storage battery

Model



Datesheet	KQ-LBR-48100	KQ-LBR-512100	KQ-LBR-48200	KQ-LBR-512200
Battery Type	LiFePO4 Lithium			
Rated Capacity	4.8KWH	5.12KWH	9.7KWH	10.34KWH
Nominal voltage	48V	51.2V	48V	51.2V
Voltage range	40-54V	40-57.6V	40-54V	40-57.6V
Recommend charge cut-off voltage	54.75V	58.4V	54.75V	58.4V
Recommend discharge cut-off voltage	40.5V	43.2V	40.5V	43.2V
Max. charge & discharge current	100A Default			
DOD	>95%			
Max parallel	16 units			
Communication	CAN & RS485			
Cycle life	>6000 @25°C			
IP level	IP54			
Working temperature range	Discharge -20~60°C , Charge 0~40°C			
Internal resistance	≤ 30mΩ			
Maimum continuous charging current	100A			
Maimum continuous discharge current	100A			
Power instructions	YES			
Weakness switch	Often Open Often Closed			
RS485 communication port	YES			
Display screen	YES			
Storage temperature	Save for 3 moths from 0~30°C			
Transport and storage form	Static batteries shall be transported and stored under semifilled conditions (about 70%)			
BMS pre-charge	YES, pre-charge time range 1ms-5000ms			
Dimension	500*470*170mm	500*470*170mm	600*500*210mm	600*500*210mm
Overcurrent protection	110A			
Short circuit protection	Release condition 1s off-load / MOS tube bears the highest short circuit current			

- Large discharge current, suitable for solar system
- Innovative BMS system to optimize the efficiency
- RS485/CAN compatible with different brand of solar inverter
- Support parallel connection, with a maximum support of 16 units

Golf cart & Balanced lift trucks lithium battery



- Lithium batteries are generally lighter, have higher energy density, longer lifespan, and faster charging capabilities compared to lead acid batteries.



Quick & Easy Installation

LEDs
Solar Fan
Solar surveillance camera +

SOLAR LEDs- solar flood light (B06 series)

Model



Datesheet	B06-25W	B06-40W	B06-60W	B06-100W	B06-200W	B06-300W
Dimension	193*146	227*180	255*208	300*250	345*285	400*315
LED	61 pcs	80 pcs	129 pcs	225 pcs	400 pcs	648 pcs
Material	Aluminum / Plastic					
Solar panel						
Wattage	6W	8W	12W	15W	25W	35W
Dimension	174*260	235*350	290*350	350*350	350*600	350*700
Battery						
Capability	4A	8A	12A	16A	25A	30A
Others						
Operation mode	Remote & Light sensor					
Packing	Neutral packaging, if there is a customized need to re-check the price.					

- Solar-powered floodlights are energy-saving and environmentally friendly, do not require an electricity supply, are easy to install, and have low operating costs.
- This model is available in aluminum casing and plastic casing options, and both are IP65-rated.
- This series comes with remote control and automatic light control, making it smarter and more convenient.
- If customization is needed, we can adjust the configuration based on your usage scenario and location.

SOLAR LEDs- solar street light (D02 series)

Model



Datesheet	D02-100W-Eco	D02-100W-Co	D02-100W-Pro
Dimension	495*210	495*210	495*210
LED	208pcs	208pcs	208pcs
Material	Aluminum / Plastic		
Solar panel			
Wattage	15W	25W	35W
Dimension	350*350	350*600	350*700
Battery			
Capability	10A	20A	30A
Others			
Operation mode	Remote & Light sensor		
Packing	Neutral packaging, if there is a customized need to re-check the price.		

- Solar-powered streetlights are energy-saving and environmentally friendly, do not require an electricity supply, are easy to install, and have low operating costs.
- This model is available in aluminum casing and plastic casing options, and both are IP65-rated.
- This series comes with remote control and automatic light control, making it smarter and more convenient.
- If customization is needed, we can adjust the configuration based on your usage scenario and location.

LEDs

SOLAR LEDs- solar street light

Model

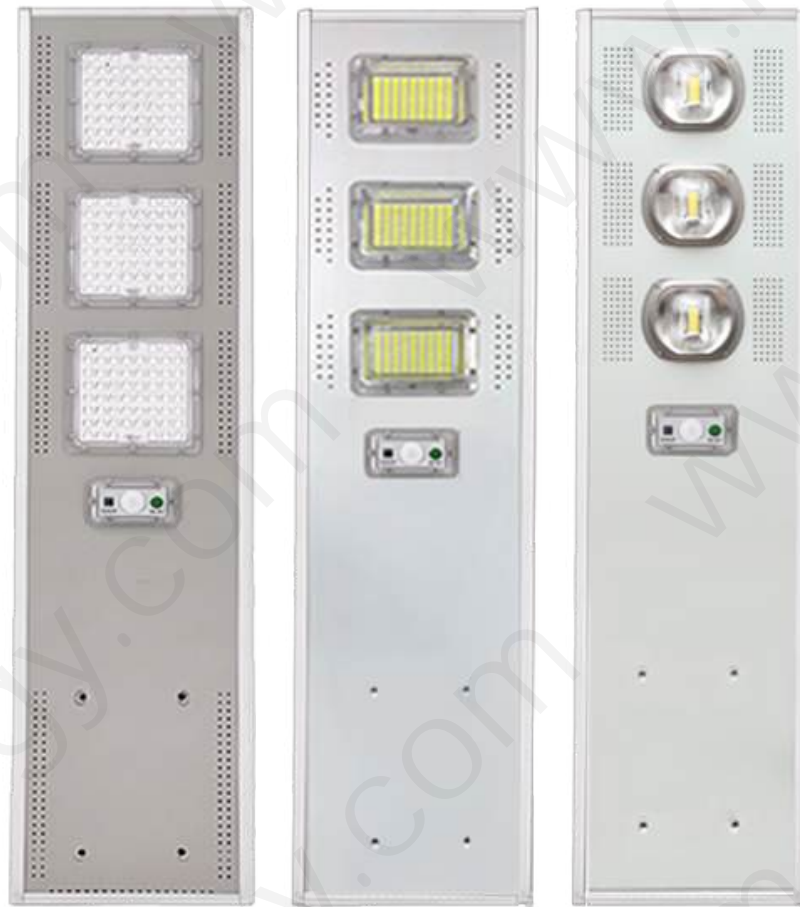


Datesheet	A12-200W	A12-400W	A12-400W
Dimension	350*450	350*600	350*680
LED	576pcs	864pcs	1152pcs
Material	Plastic		
Solar panel			
Wattage	18W	25W	30W
Dimension	--	--	--
Battery			
Capability	10A	20A	30A
Others			
Operation mode	Remote & Light sensor		
Packing	Neutral packaging, if there is a customized need to re-check the price.		

- Solar-powered streetlights are energy-saving and environmentally friendly, do not require an electricity supply, are easy to install, and have low operating costs.
- This model has a plastic casing and is IP65-rated.
- This series comes with a remote control and automatic light control, making it more innovative and more convenient.
- If customization is needed, we can adjust the configuration based on your usage scenario and location.

SOLAR LEDs- solar street light

Model



Datesheet	A100-50W	A100-100W	A100-150W	A00-200W
Dimension	500*220	700*220	900*220	1000*220
LED	60pcs	120pcs	180pcs	240pcs
Material	aluminum			
Solar panel				
Wattage	15W	20W	25W	30W
Dimension	--	--	--	--
Battery				
Capability	15A	20A	25A	30A
Others				
Operation mode	Remote & Light sensor			
Packing	Neutral packaging, if there is a customized need to re-check the price.			

- Solar-powered streetlights are energy-saving and environmentally friendly, do not require an electricity supply, are easy to install, and have low operating costs.
- This model has a aluminum casing and is IP65-rated.
- This series comes with a remote control and automatic light control, making it more innovative and more convenient.
- If customization is needed, we can adjust the configuration based on your usage scenario and location.

LEDs

SOLAR LEDs- solar street light

Model



Datesheet	C01-40W	C01-60W	C01-80W	C01-120W
LED	30*2pcs	30*3pcs	30*3pcs	30*4pcs
Material	aluminum			
Solar panel				
Wattage	40W mono	60W mono	80W mono	120W mono
Dimension	--	--	--	--
Battery				
Capability	30A	50A	60A	12V40A
Others				
Operation mode	Light sensor / Motion sensor (optional)			
Packing	Neutral packaging, if there is a customized need to re-check the price.			

- Solar-powered streetlights are energy-saving and environmentally friendly, do not require an electricity supply, are easy to install, and have low operating costs.
- This model has an aluminum casing and is IP65-rated.
- This series is equipped with automatic light control and motion sensor control (optional) , making it more innovative and more convenient.
- If customization is needed, we can adjust the configuration based on your usage scenario and location.

Solar surveillance camera with LEDs

Model



Datesheet	C01-60W-camera	C01-80W-camera	C01-120W-camera
LED	30*3pcs	30*3pcs	30*4pcs
Material	aluminum		
Solar panel			
Wattage	60W mono	80W mono	120W mono
Dimension	--	--	--
Battery			
Capability	12V21A	12V36A	12V48A
Others			
Operation mode	Light sensor / Motion sensor (optional)		
Camera	built-in 4G or Wi-Fi Hemispherical camera		
Packing	Neutral packaging, if there is a customized need to re-check the price.		

- Solar-powered streetlights are energy-saving and environmentally friendly, do not require an electricity supply, are easy to install, and have low operating costs.
- This model has an aluminum casing and is IP65-rated.
- This series is equipped with automatic light control and motion sensor control (optional) , making it more innovative and more convenient.
- This series features a built-in dome camera and high-definition infrared camera, making it more versatile.
- If customization is needed, we can adjust the configuration based on your usage scenario and location.

Solar surveillance camera with LEDs

Model



Datesheet	D01-60W-camera
LED	60pcs
Material	aluminum
Solar panel	
Wattage	80W mono
Dimension	--
Battery	
Capability	12V48A
Others	
Operation mode	Light sensor / Motion sensor (optional)
Camera	built-in 4G or Wi-Fi Hemispherical camera
Packing	Neutral packaging, if there is a customized need to re-check the price.

- Solar-powered streetlights are energy-saving and environmentally friendly, do not require an electricity supply, are easy to install, and have low operating costs.
- This model has an aluminum casing and is IP65-rated.
- This series is equipped with automatic light control and motion sensor control (optional) , making it more innovative and more convenient.
- This series features a built-in dome camera and high-definition infrared camera, making it more versatile.
- If customization is needed, we can adjust the configuration based on your usage scenario and location.

Solar surveillance camera

Solar surveillance camera

Model

HD



Datesheet	GAQ-4G-200W
Function	App smart control
Storage card	Equipped with a storage card (16GB/32GB/64GB etc)
Solar panel	
Wattage	10W mono *2
Dimension	--
Battery	
Capability	20000mah
Others	
Operation mode	24hours continuous operation / Motion sensor (optional)
Camera	4G or Wi-Fi Hemispherical camera
Packing	Neutral packaging, if there is a customized need to re-check the price.

- Supports night vision infrared camera and 360-degree rotation.
- Comes with a built-in 4G network module for remote control via an app.
- Supports 24-hour continuous operation or human body sensing work mode.

Solar Fan

Solar Fan 16inches

Model



Datesheet	FAKQ-16-T1
Function	usb charging output, and equipped with LED light
Adapter	2A adapter charger
Solar panel	
Wattage	25W
Dimension	--
Battery	
Capability	15000mah
Others	
Operation mode	3 level (can be adjusted separately, namely, "High", "Low" and "Weak".)
Charging time	4-6hours
Packing	Neutral packaging, if there is a customized need to re-check the price.

Environmentally friendly, cost-effective, portable, and can operate in remote areas without electricity.

Solar Fan 12 inches with Bluetooth Speaker

Model



Datesheet	FAKQ-12-M1
Function	Usb charging output, Bluetooth speaker, and equipped with 3 meters LED blub
Adapter	2A adapter charger
Solar panel	
Wattage	12W
Dimension	--
Battery	
Capability	5200mah
Others	
Operation mode	3 level (can be adjusted separately, namely, "High", "Low" and "Weak".)
Charging time	4-6hours
Packing	Neutral packaging, if there is a customized need to re-check the price.

Environmentally friendly, cost-effective, portable, and can operate in remote areas without electricity.

KEQI ENERGY

Solar Energy | LEDs | Lithium Battery Packs
OEM & ODM SOLAR MANUFACTURER

Contact+

www.keqienergy.com

+0086-13527119389

kikiguo@keqienergy.com

If you need to consult more products, please contact us!